

*Symposium satellite de 9ème colloque de la Société des Neurosciences*

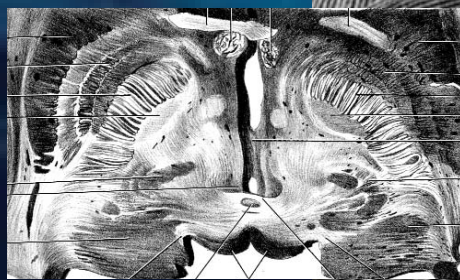
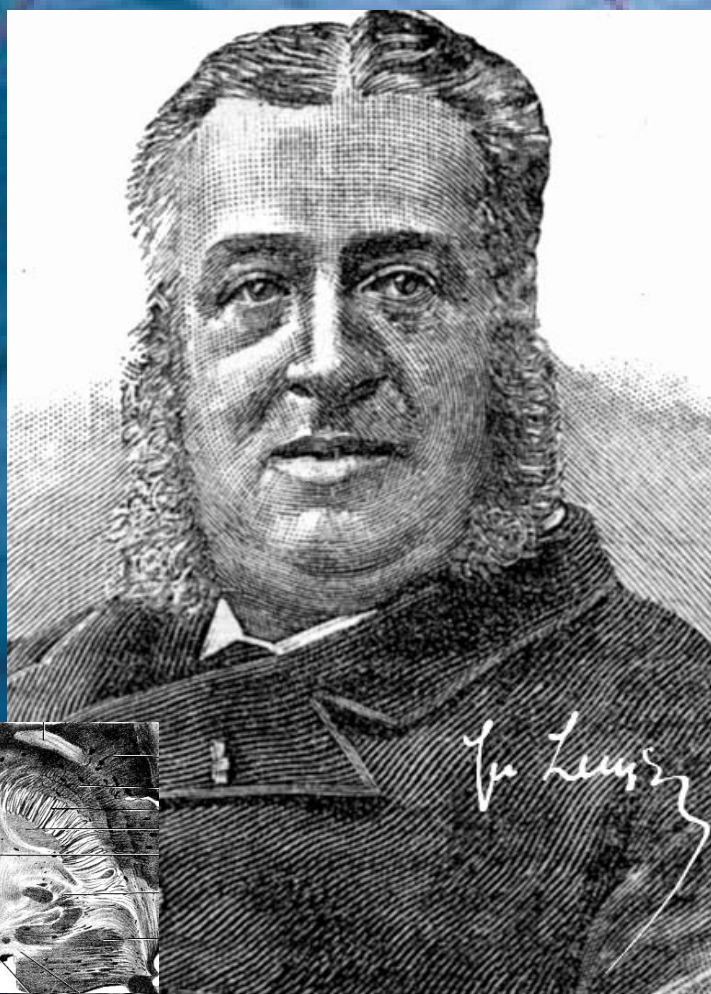
# Basal ganglia-subthalamic nucleus symphony: who conducts?

**1st June, 2009**

**Inmed Marseille- Luminy  
(Provence, France)**

**Organized by Constance Hammond**

**J. Baufreton (FR)  
C. Baunez (FR)  
A.L. Benabid (FR)  
P. Brown (UK)  
P. Damier (FR)  
J.M. Deniau (FR)  
J. Féger (FR)  
C. Hammond (FR)  
L. Kerkerian-Le Goff (FR)  
P. Magill (UK)  
L. Puelles (S)  
E. Scarnati (IT)  
L. Tremblay (FR)  
J. Volkmann (G)  
J. Yelnik (FR)**



**INMED - INSERM U901  
Parc Scientifique de Luminy - BP 13  
13273 MARSEILLE Cedex 9  
Mail : touschercheurs@inmed.univ-mrs.fr  
Tél. : +33 (0)4 91 82 81 43 - Fax : +33 (0)4 91 82 81 05**